

Metrolog

Flow and Pressure Data Loggers



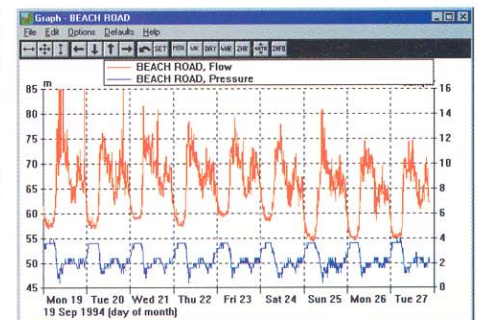
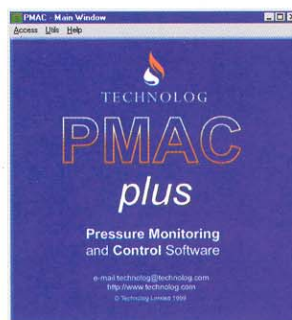
TECHNOLOG

The Metrolog range of data loggers has been developed to monitor and record pressures and flows within water distribution systems.



- Light-activated LCD
- Internally powered and housed in a robust, fully waterproof enclosure
- Battery life in excess of 5 years
- Compatible with Technolog's communication and configuration software for PCs, Psion Organiser and Workabout
- Metrolog H and P data loggers feature an integral pressure transducer
- Remote communications options

Comprehensive data analysis is provided by Technolog's Windows™-based PMAC software



TECHNOLOG

Engineering Solutions for the Utilities

Technolog can also provide a complete installation and maintenance service

Metrolog

Flow and Pressure Data Loggers

Metrolog H

The Metrolog H pressure and bi-directional flow data logger is designed to be directly mounted onto the Kent Helix 2000 and 3000 series flow meters. This eliminates the need for a pulse unit, additional wiring, connections and the traditional mechanical index.



Metrolog P

The Metrolog P flow and pressure data logger utilises the same robust enclosure as the Metrolog H, but with a flow input connector.



Metrolog F

Metrolog F is a cost effective single channel flow data logger with no integral pressure sensor. The flow input cable is pre-wired to the unit, ideal for permanent installations. Metrolog F will accept a pulse signal from most mechanical and electro-magnetic flow meters.





Selection Guide

	H	Model P	F
Display	Yes	Optional	Optional
Direct mount - Kent Helix 2000/3000 meters	Yes	-	-
Flow	Yes Bi-directional	Optional Uni-directional Bi-directional	Yes Uni-directional
Flow Input water meter pulser	-	Socket	Integral 1.5 metre Flow cable
Integral pressure sensor	Yes	Yes	-
Pressure ranges (meters)	0-100 or 0-200	0-100 or 0-200	-

Memory Capacity

Pressure only, recorded at 15 minute intervals	260 days	260 days	-
Flow only, recorded at 15 minute intervals	143 days	143 days	143 days
Pressure and flow data, recorded at 15 minute intervals	92 days	92 days	-

Accessories

	H	Model P	F
Kent PU10 terminated with 3 way connector	-	●	-
Kent LRP 10 terminated with 3 way connector	-	●	-
Kent Aquamag connector	-	●	●
Quick release helicoil pressure hose	●	●	-
Quick release 12" hydrant hose	●	●	-
Hydrant cap complete with female quick-fit	●	●	-
Stainless steel wall mounting bracket	●	●	●

● = available
- = not available



Inputs	Absolute pressure Bi-directional flow - Metrolog H and P Uni-directional flow - Metrolog P and F
Pressure Input	Input range: 100 or 200 metre head of water as standard - other ranges, consult factory Operating temperature range: +1 to 30°C (water) Accuracy/Resolution: 0.5% of range Pressure Port: 1/8" BSP female thread fitted with male probe
Flow Input	Channel type: Count - counted over and recorded at preset intervals
Serial Port	Type: Optically isolated, full duplex, asynchronous Data Rate: 1200/1200 baud transmit/receive, V22 for remote communication
Memory	Type: Solid state. Non-volatile Size: 32 Kilobyte, allocatable between channels as required Data retention: Life of battery
Clock	Type: Crystal controlled calendar clock, with leap year adjustment
Clock Accuracy	100 seconds per month maximum error over operating temperature range
Supply	Type: Internally powered by single cell, battery change at factory Life: Greater than 5 years or 1 million pressure readings
Recording	Recording interval: Programmable between 1 second and 4 hours Logging method: Time based or threshold logging Data storage: Rotating store or store until full
Environmental	Operating temperature: -20°C to +50°C Protection classification: IP68
Connectors	Serial port, 4 way Flow input, 3 way (if fitted), conforming to MIL-C-26482
Mechanical	Weight: 600 grams