

PMAC Lite Guide to Operation

(Preliminary Manual)

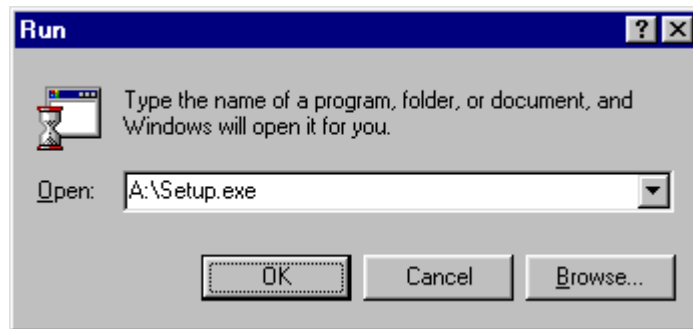
08 August 1999

Contents

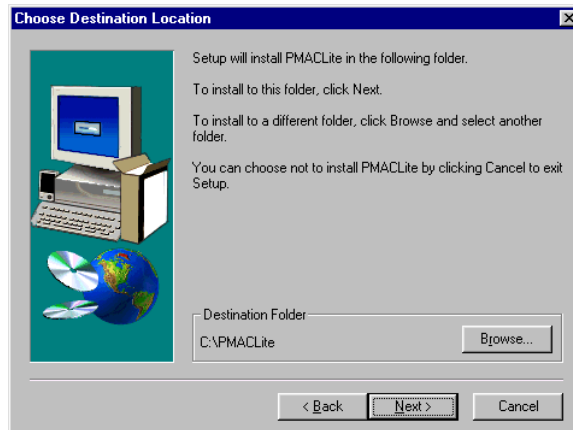
Installation of the Software	4
5 Steps to using a Datalogger	7
Configuring a Logger	8
Logger setup (Logger settings editor)	10
Reading Data (data download)	12
Graphing Program	13
Annotations	15
Values & Exporting Data	16
Live Input Readings	18
Quick Reference Flow Charts	19

Installation of the Software

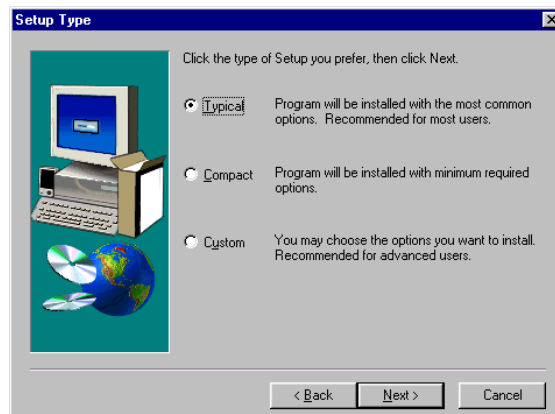
Insert installation disk 1 into the floppy disk drive of your computer, on most computers this will be drive A:. Using the mouse pointer click on the “**Start**” button (Windows 95) and then the “**Run**” icon, this will produce the window shown below.



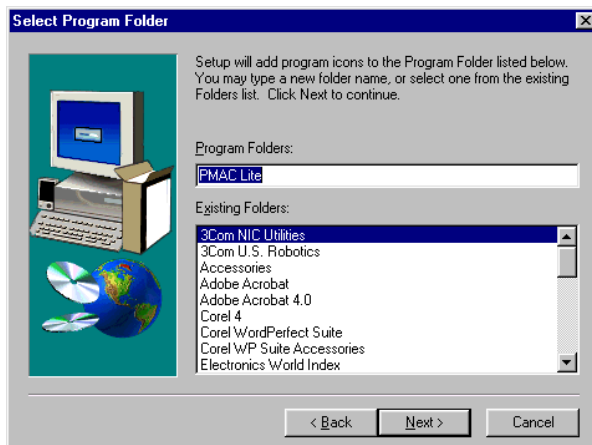
At this point you can either type in from the keyboard “**A:\Setup.exe**” as shown above, (without exclamation marks) or use the “**Browse button**” to find the file Setup.exe on the relevant floppy disk drive. (Note if your floppy drive is B: type “**B:**” in place of “**A:**”) When this has been completed click on the “**OK**” button, the window below should now appear.



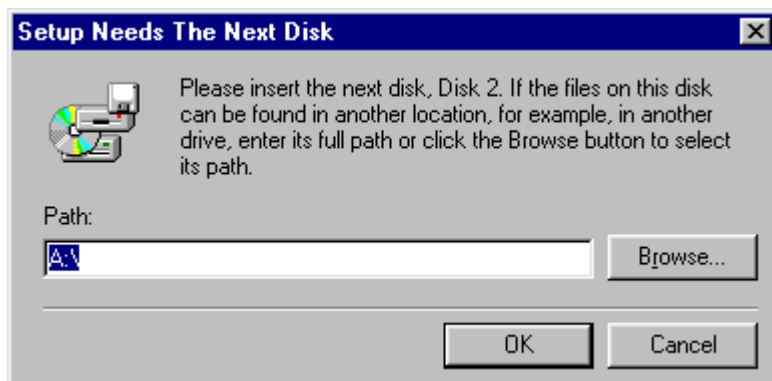
For 99% of installations all that is required at this point is to click on the “**Next**” button and the window below will now appear. Again for 99% of installations the default setting “**Typical**”, shown in the window below can be left as it is and simply click on the “**Next**” button once again.



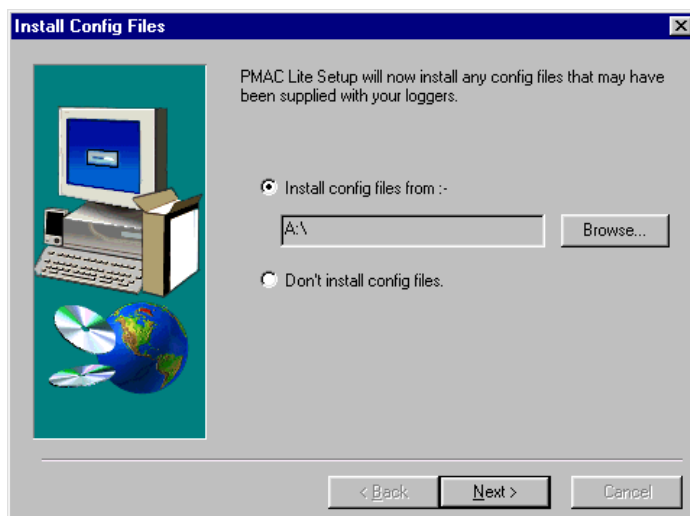
The installation program now indicates to which Program Folders it is going to add the program icons by displaying the window shown below, once again it is simply a matter of clicking on the “**Next**” button.



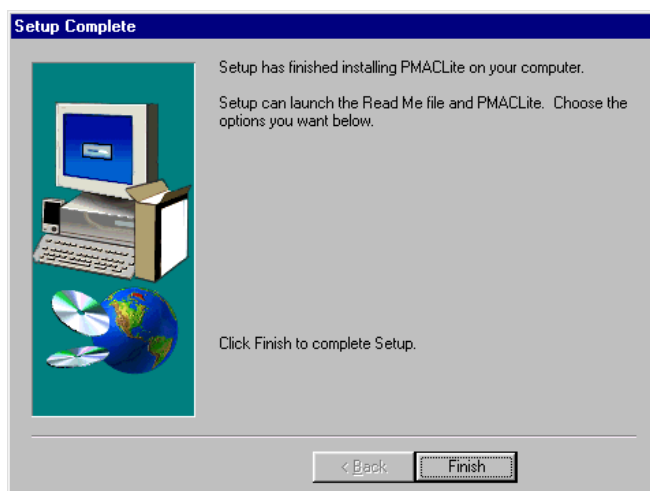
The window below will appear prompting you to insert the next disk, simply insert disk 2 and click on the “**OK**” button.



When disk 2 has finished copying files to the computer, the window below will appear, if you have also been given a disk with configuration files, remove disk 2 and insert the configuration files disk and click on the “**Next**” button. Disks containing configuration files are not supplied as standard and if you do not have a disk simply click on the “**Next**” button.

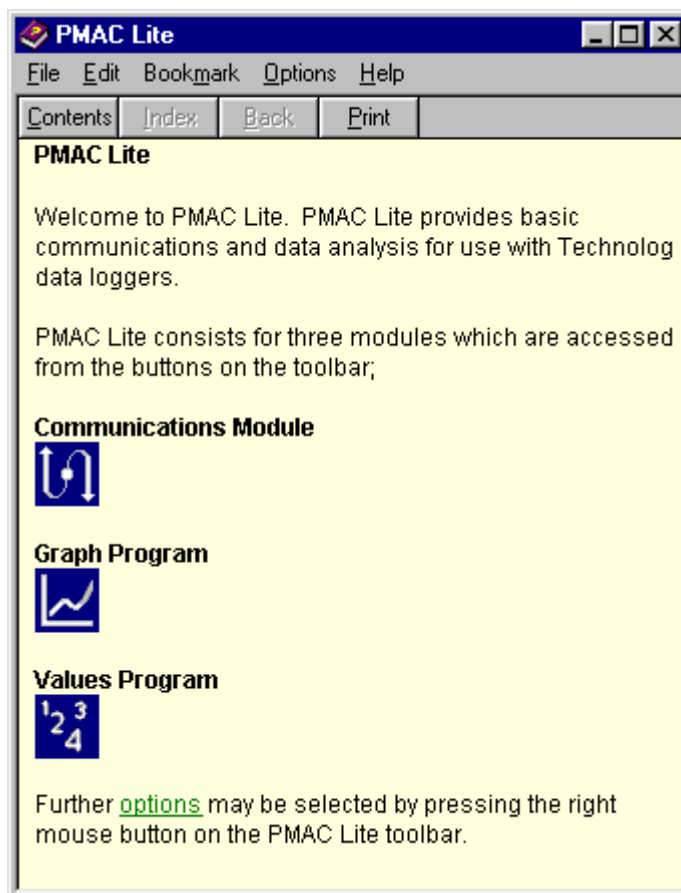


The following window will appear stating that the installation is now complete, prompting the user to now click on the “Finish” button.



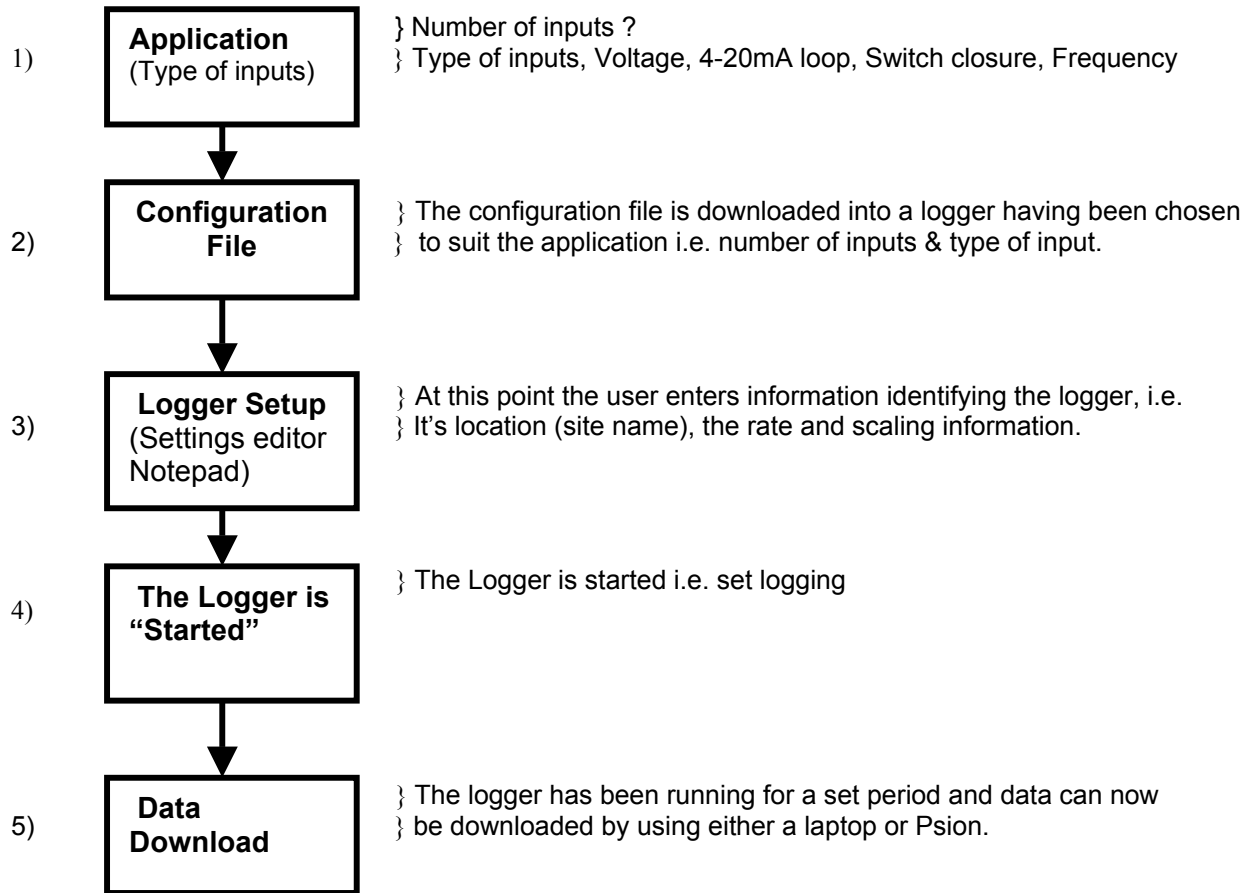
The program PMAC Lite can now be run by clicking on the PMAC Lite icon on the Windows desktop, or by clicking on the Windows “Start” button then “Programs” and then selecting the program PMAC Lite in the usual Windows manner.

The on line help can be accessed by pressing the “F1” button which produces the Window shown below.



5 Steps to using a datalogger

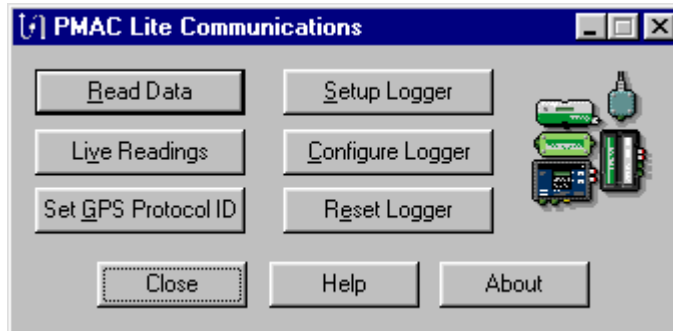
The flow chart shown below guides the user through the basic steps of putting a logger into service and highlights Considerations required at each step before moving onto the next.



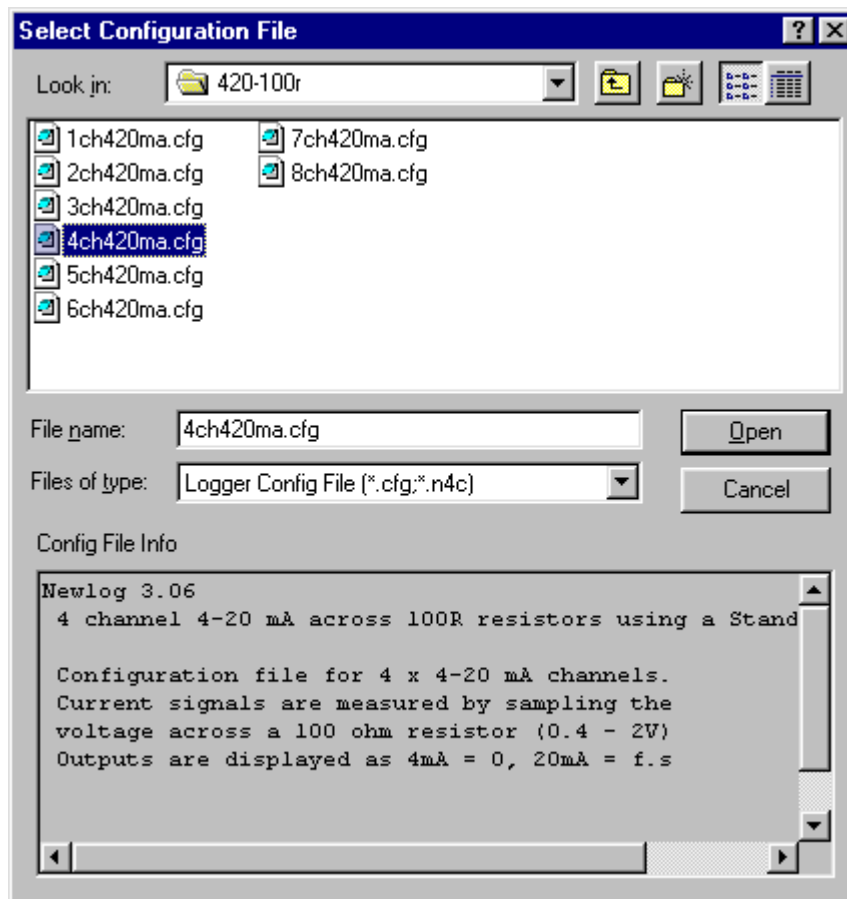
Configuring a logger



To configure a logger, enter the communications menu by “clicking “on the button with 2 arrows and a dot and then clicking on the “**Configure logger**” button.



The following menu will appear, allowing you to choose a configuration file and giving a brief description of the function of the configuration file selected. The description is in the lower window of the menu.



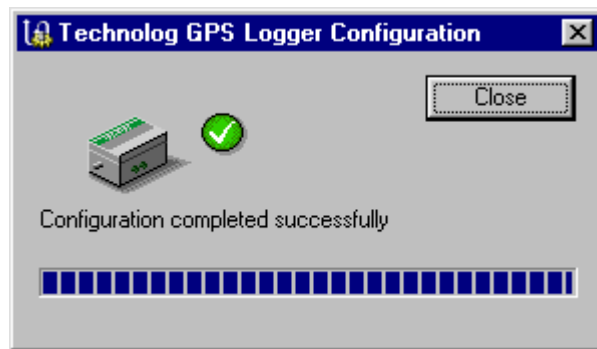
Select the required configuration file and click on the “**Open**” button and the following window will appear.



When the computer establishes communications the following window will be displayed whilst the logger is being configured.



Followed by the confirmation of transfer window indicating a successful configuration process.



At this point the logger has now been successfully configured for the application and is now ready to be setup.

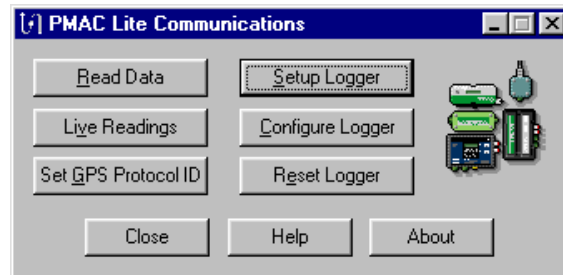
Logger setup is basically editing or setting the "site name", channel names or numbers and scaling factors / measurand units.

Logger setup

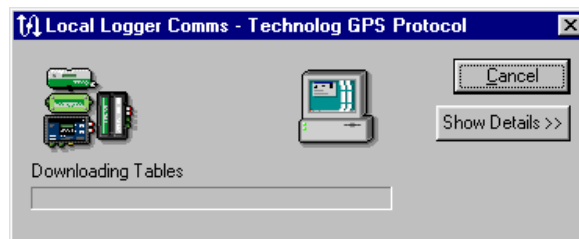
To enter the communications menu “click “on the button with 2 arrows and a dot.



The menu shown below will then appear, now click on the button labelled “setup logger”

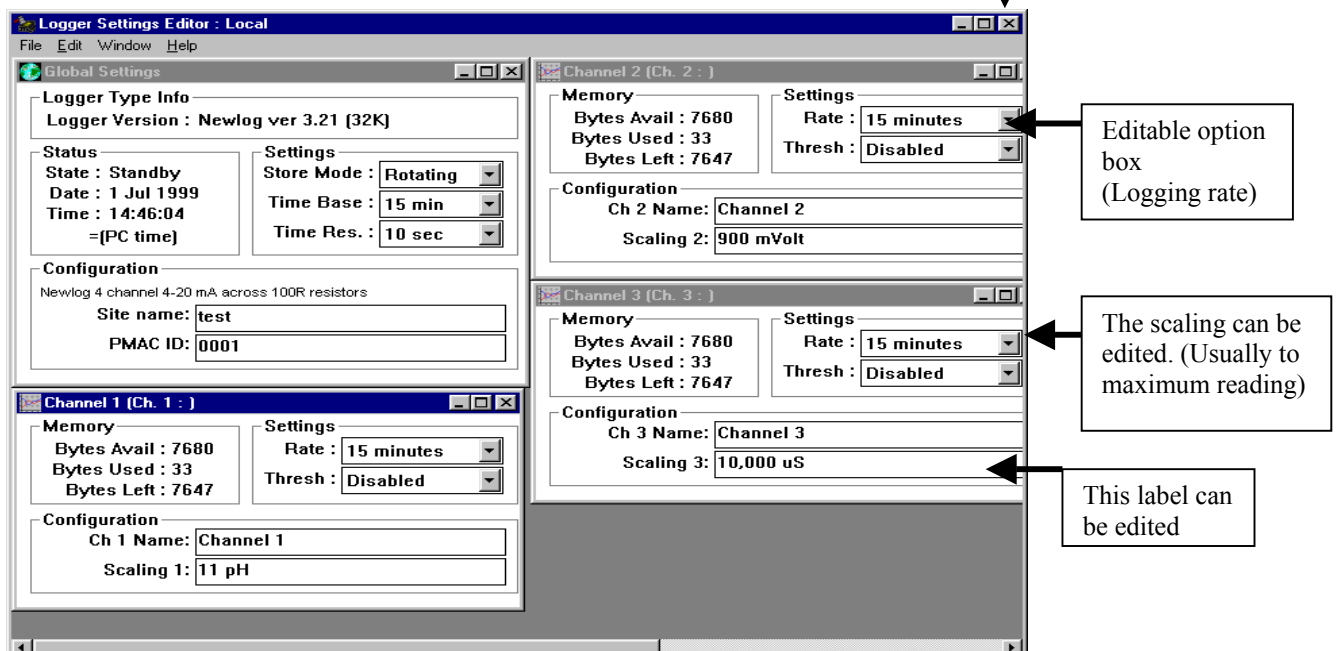


The software will now display the window shown below whilst it downloads the current Logger settings.



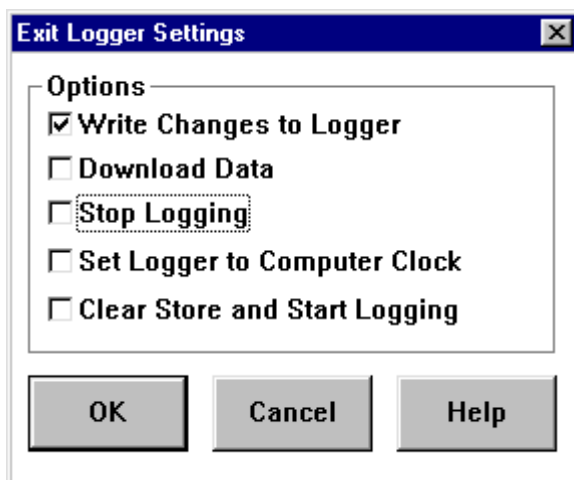
When the above has been completed the logger settings editor will be displayed as shown below. This can simply be edited by using the mouse pointer to select the required “tiled” window and clicking to place the cursor in any of the option boxes surrounded by the configuration box.

The settings options may also be altered at this point. This is carried out in the usual window manner, by clicking the option boxes down arrow and selecting the required option by clicking on it with the mouse pointer. When all the required alterations to each tiled window have been made, i.e. each channel and the global settings window, the logger settings editor can now be closed in the usual windows fashion by clicking on the cross in the right hand corner of the logger settings editor window.

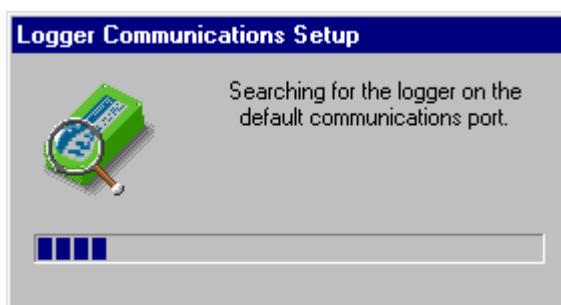


The options menu shown below will now appear.

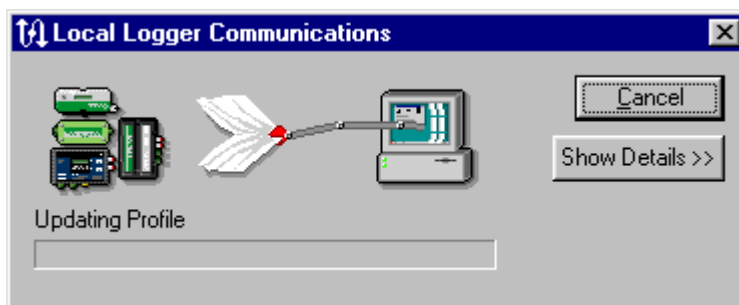
This is the point at which, all the previous changes that were made using the logger settings editor will be stored. Using the mouse pointer click on the “**write changes to logger**” check box, this will insert a tick in the box. (It may also “tick” other boxes, if you wish to change these, just re-click on them to “set” or “reset” the option) Now “click” on the “**OK**” button.



The following window will appear whilst PMAC Lite establishes communications with the logger.



Followed by the updating logger window.

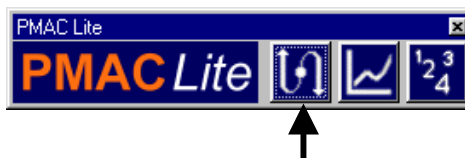


The updating will then be completed and communications will finish.

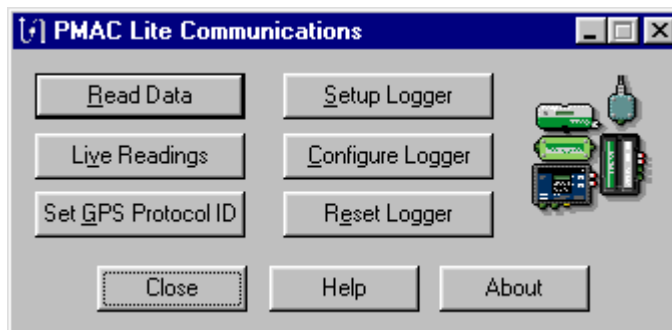
The logger at this point is now set with the required channel names (descriptions), scaling, site name and PAMC ID.

Reading Data

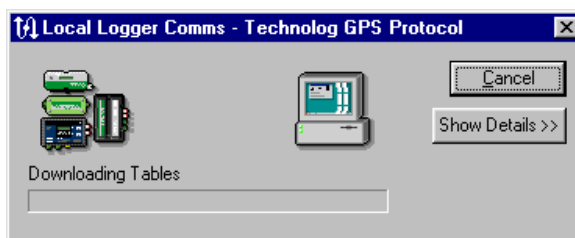
(Downloading data from the logger)



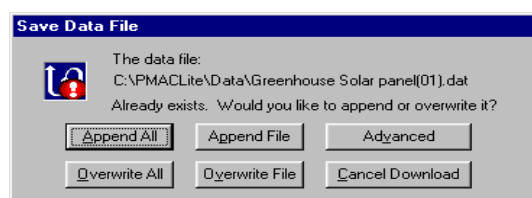
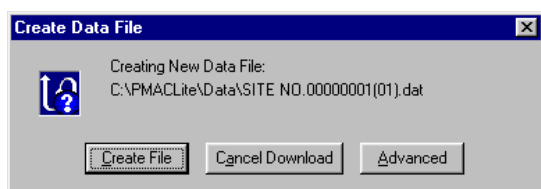
Enter the communications menu by “clicking “on the button which has 2 arrows and a dot, then “click” on the button labelled “**Read Data**”



The following window will be displayed.



Followed by



OR

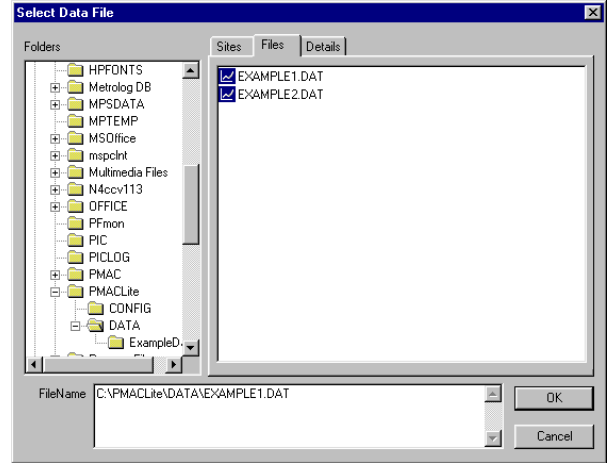
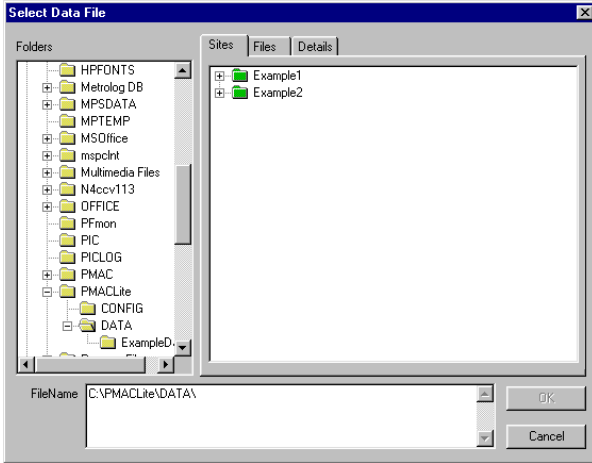
The window on the left is typical of the first time a site is downloaded as there is no file to update and the program creates a new file. If there is an existing site with data the new data can be appended to the existing file, this allows graphing of on going data without gaps.

Graphing Program

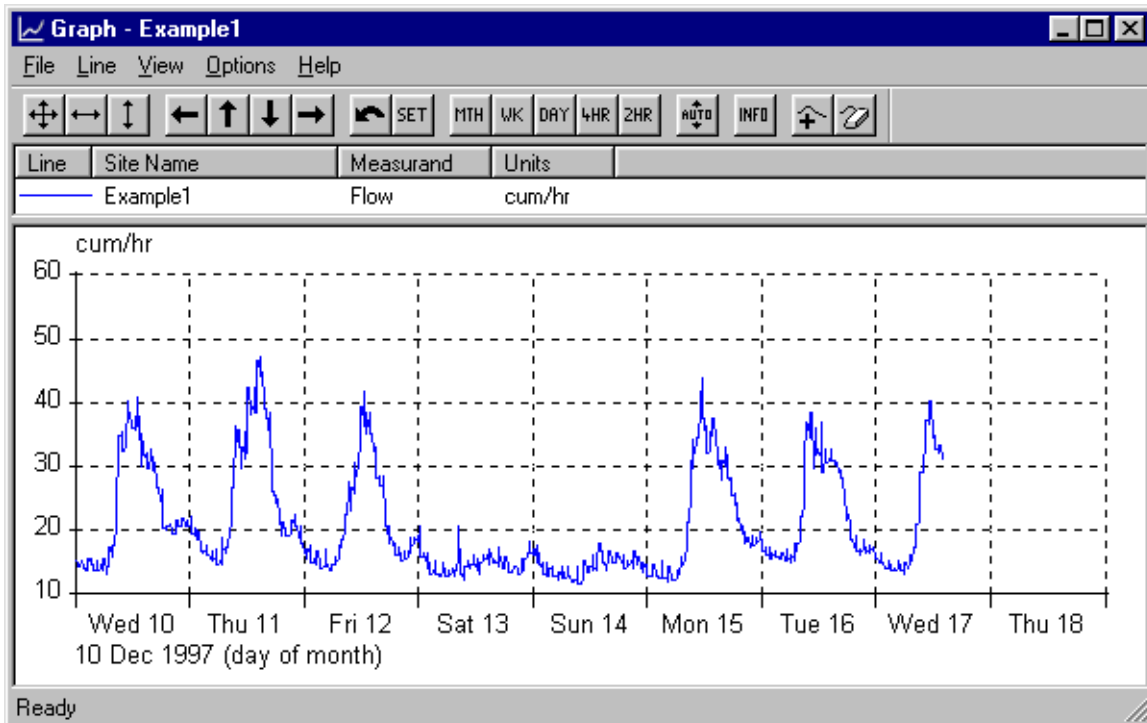
Clicking the graph icon shown below opens the graph program.



The following window will then be displayed allowing you to choose the file to be graphed.



The **“Sites”** or **“Files”** tab can now be clicked allowing a selection of sites or files to be graphed by simply double clicking on them, this will bring up a graph as shown below.



Recall - Recalls program settings temporarily stored by the Set command (above). This function is particularly useful if you wish to take a close look at a data point then return to a broader view.

Autoscale Y-Axis Automatically scales Y-axis to best fit in window for current data.

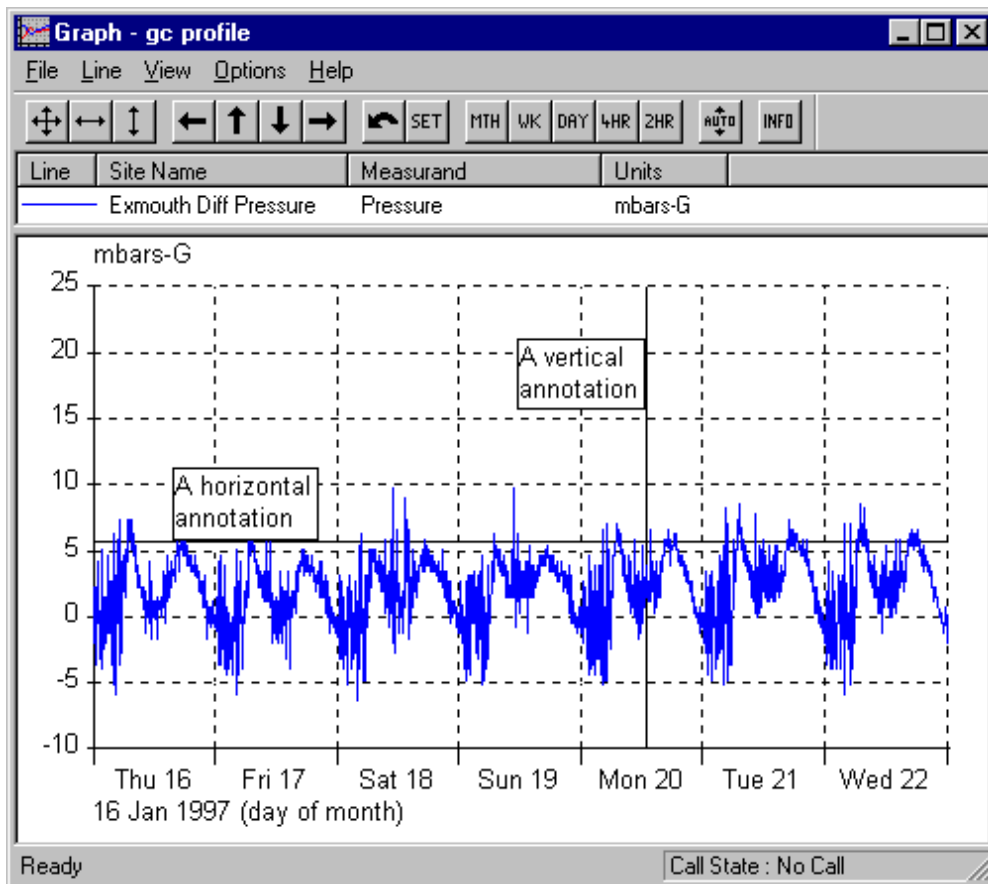
Zoom On Enables zoom (decreases range of selected axis - graph is made bigger) on Left axis, Right axis or Both axes.

Division Resolution Enables resolution to be changed to Low, Medium or High as required for optimum reproduction on your printer.

Annotate Generates vertical or horizontal annotation boxes - text can be inserted or edited and boxes can be re-positioned as required. See Annotations, later in this section for further detail.

Annotations

Horizontal or vertical annotations can be added to a graph by right clicking on the graph and selecting the appropriate type.



The position of the annotation can be changed by dragging the line or flag. The text can be changed by double-clicking on the flag or by right-clicking on the flag and selecting properties. The text in the box can be on multiple lines press CTRL-ENTER to start a new line.

An annotation can be deleted by right-clicking on the flag and selecting delete.

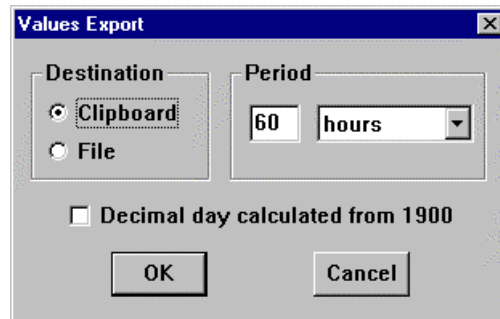
Annotations are saved with a PMG file and can be printed with a graph.

Print

Prints the current table. Available options include insertion of a subtitle and setting of the period to Print.

Export

Opens the **Values Export** window – enables configuration of selected data into .CSV format for export either to a file or to the Windows Clipboard.



Graph

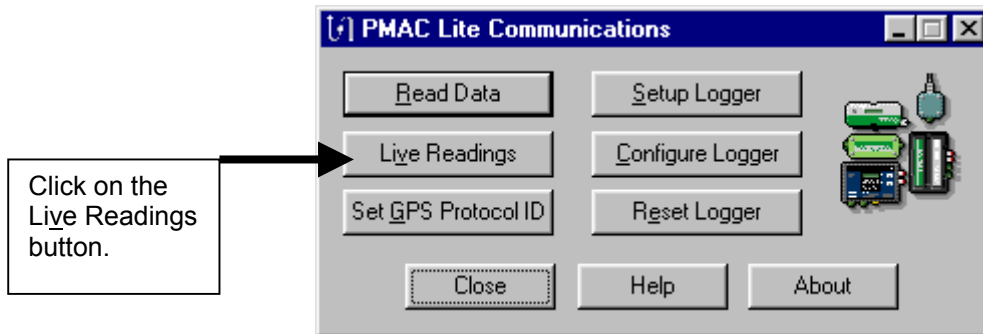
Opens the **Graph** window with the data displayed as a graph.

Exit

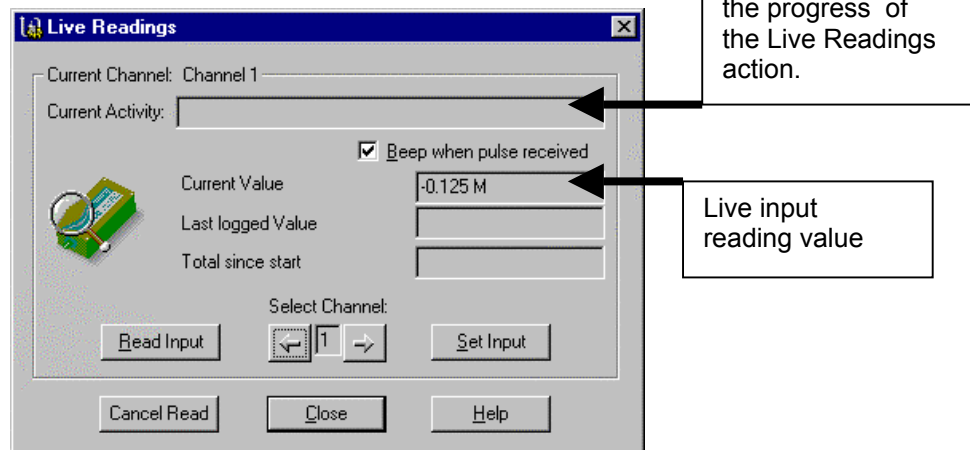
Closes the **Values** window.

Live Input Readings

The “Live Readings” button is an excellent way of checking the installation wiring prior to setting the logger logging.



The menu shown below will appear after clicking the “Live Readings” button.



Note

If the logger has just started logging and is logging at a rate greater than 1 sec, when you attempt a live input reading the software will report “Not Available yet” as the logger has not taken a reading.

Select Channel: When using multi-channel loggers this option allows selection of the channel to be read.

Read Input Initiates a Read on the selected Input.

Set Input Allows an Offsets to be set.

Quick Reference Flow chart of Menu's for Logger communications

